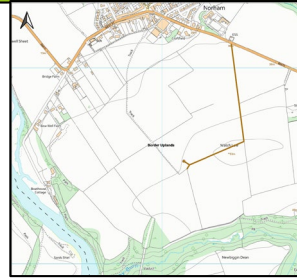
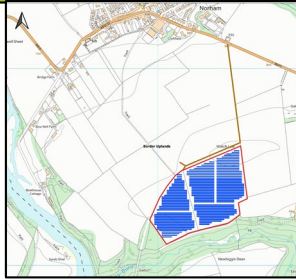
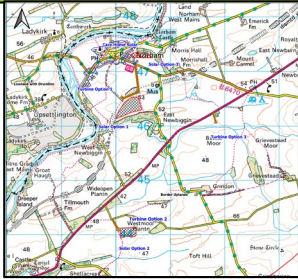


Norham Community Renewable Energy Project

RCEF Stage: 2



Key Facts

Wind Turbine	0.9MW
Solar Array	8.9MW
Community benefits	Decarbonisation, lower energy costs, energy security, revenue stream for further energy projects.

The Story

The initial aim of the Norham Development Trust (NDT) was to carry out a feasibility study focused on the potential for renewable technology across the Parish of Norham. The main drivers for the study were to identify potential projects to assist the local parish in decarbonisation, as well as the potential to generate revenue for the local community through the development of renewable projects and potentially offset electricity use in public buildings such as the village hall. Funding for the initial study was provided by RCEF, with the study recommending the development of a modest wind and solar development close to the village. Following the completion of the initial study, NDT, our consultants and the climate change team at Northumberland County Council held an initial community briefing, which was generally well received, to outline the findings from the feasibility study and the next steps. We are now moving forward with a full planning application to be submitted in 2023, having received some additional financial support from Northumberland County Council, Berwick Community Trust and the RCEF.

Challenges & Risks

The most significant risk to the project is the lack of planning policy support for onshore wind development in England. As a community group, we are actively engaged to ensure that the proposals secure the buy-in of the local community to bring the proposals forward for development. We intend to host a follow-up consultation event, following on from our initial event in February 2022 which received very encouraging feedback and support for the proposal. As well as planning, ongoing works continue to ensure that a grid connection can be secured for the project, with a full application submitted to the Distribution Network Operator (DNO) in September. The landowners have been very supportive of the project and with our industry-experienced consultants, a financial model has been produced to confirm financial viability, while the final business model is yet to be decided.

We held a community meeting in February 2022 to present our work to date and intentions going forward which received very encouraging feedback. We have approached SPEN regarding grid connection and we are continuing dialogue and have recently submitted a full connection application.

Lessons Learned

The involvement in the project to date has been very positive and we would not change anything we did. We are still seeking funding to complete the work required to apply for planning. We have applied to Community Energy South for assistance to advise on finance, governance and business models. The ever changing world in which we live requires us to be flexible to the challenges in front of us.

Key Figures

Project size	9.8MW
Energy Generation	2.1GWh (Wind), 8.7GWh (Solar)
Other Finance	NCC Grant £5,000 Berwick Community Trust Grant £10,000
CO2 savings	532 Tonnes
RCEF grant	Stage 1 £31,800 Stage 2 £35,000

Further Notes

LEP area : North East
Planning submission target 2023