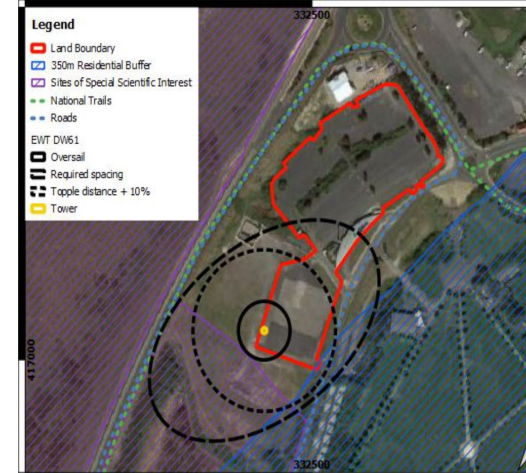
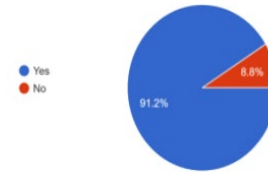
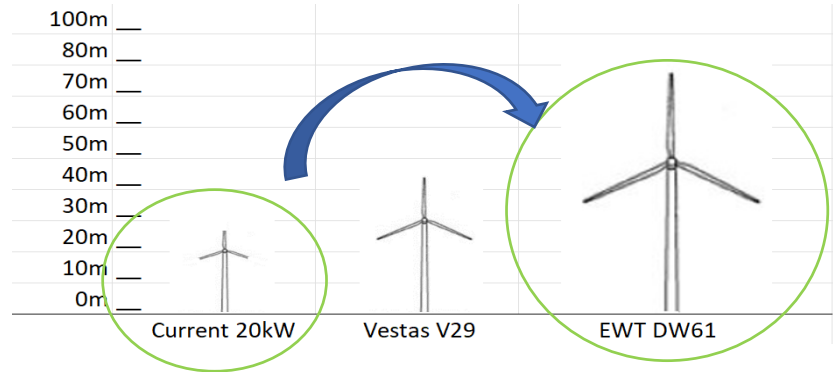


Zero Carbon Liverpool City Region: Re - Energise Southport

RCEF Stage: 1 & 2



The Story

Stage 1 feasibility looked at re-energising the site of a defunct 20kW turbine with a 1MW turbine (now the smallest new turbine available from large manufacturers). The work has considered constraints, such as MOD, fixed links, birds, and airports, and received a favourable initial planning opinion (as the site is considered to be re-energising as opposed to a new site).

Next steps: A 1-year bird survey will be required and other environmental impact assessments (EIA) for the project to go to planning. A continuation of the community consultation. MOU for the land lease and PPA for the private wire to leisure centres with Sefton Council. Technically and economically the project is strong, (great wind speeds and a private wire to the leisure centre and splash world).

Challenges & Risks

Signing the land lease & PPA (Sefton has worked closely with us to date and is keen for the project to succeed - the Leisure centre and splash world are their biggest CO2 emitters and a big cost, so they are motivated to see both reduced). Planning and public opposition – to date community consultation has been favourable and no vocal opposition has been noted.

Lessons Learned

Engage all stakeholders from the start. Try and build up a good core working group and include as many people in updates as possible to keep interest and participation strong.

Key Facts

Wind Turbine	46m hub height, 77m tip height 2 year bird survey required Project IRR 9.2%
EV charge Points	Potential for Eco centre to be a charge hub and co-location of battery storage.
Community	Ongoing engagement – survey received 200 responses, webinars, posters etc
Landowner	Sefton Council LOS given

Key Figures

Project size:	1MW
Tech type	
Energy Generation	~2,610 MWh (~871 houses)
Private finance leveraged	~£1,600,000
CO2 savings	679
RCEF grant	£40,000 + £100,000

Further Notes

LEP area: Liverpool City Region

Link for further info:

<https://southportcommunityenergy.org.uk/>